

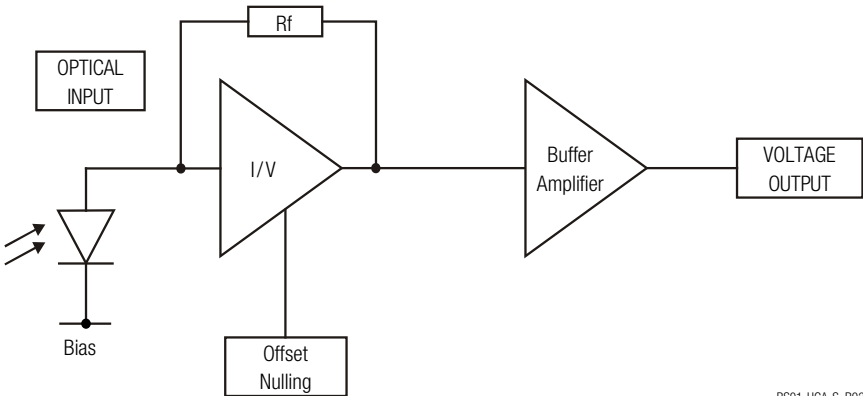
Datasheet

HCA-S-400M-SI

400 MHz Photoreceiver
with Si-PIN Photodiode



The picture shows model HCA-S-400M-SI-FS.
The photoreceiver will be delivered without post holder and post.

Features	<ul style="list-style-type: none">• Si-PIN photodiode, 0.8 mm active diameter• Bandwidth DC – 400 MHz• Amplifier transimpedance gain 5.0×10^3 V/A• Max. conversion gain 2.7×10^3 V/W @ 800 nm• Spectral range 320 – 1000 nm• Free-space input 1.035"-40 threaded, alternatively 25 mm diameter unthreaded• Easily convertible to fiber optic input (FC and FSMA) with optionally available screw-on adapters• Fiber optic input also available as permanently mounted FC- or FSMA-input• UNC 8-32 and M4 tapped holes for mounting on standard posts with metric and imperial thread
Applications	<ul style="list-style-type: none">• Spectroscopy• Fast pulse and transient measurements• Optical triggering• Optical front-end for oscilloscopes, A/D converters and HF lock-in amplifiers
Block Diagram	 <p>BS01-HCA-S_R02</p>

400 MHz Photoreceiver with Si-PIN Photodiode

Available Versions

HCA-S-400M-SI-FST



Picture shows 1.035"-40 threaded flange with internally threaded coupler ring (outer diameter 30 mm)

1.035"-40 threaded flange for free space applications. Compatible with many optical standard accessories and for use with various types of fiber connector adapters.

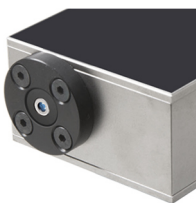
Optionally available:

Fiber adapters PRA-FC, PRA-FCA and PRA-FSMA.

The coupling efficiency will depend on fiber type.

With the relative large 0.8 mm dia. photodiode installed in the HCA-S-400M-SI input coupling is not critical. However, standard SM 9/125 fibers (PC or APC) with low numerical aperture (NA) are recommended for ensuring near 100% coupling efficiency.

HCA-S-400M-SI-FS



Picture shows unthreaded flange with 25 mm diameter

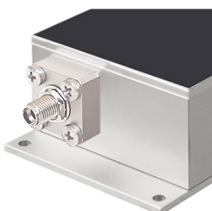
25 mm dia. unthreaded flange for free space applications. Compatible with many optical standard accessories.

HCA-S-400M-SI-FC






Fix/permanent FC fiber connector for high coupling efficiency and excellent conversion gain accuracy.

HCA-S-400M-SI-SMA



Fix/permanent FSMA fiber connector for high coupling efficiency and excellent conversion gain accuracy.

400 MHz Photoreceiver with Si-PIN Photodiode

Related Models	<p>HCA-S-400M-IN-FST InGaAs-PIN, Ø 0.3 mm, 900 - 1700 nm free space input, 1.035"-40 threaded flange</p> <p>HCA-S-400M-IN-FS InGaAs-PIN, Ø 0.3 mm, 900 - 1700 nm free space input, 25 mm dia. unthreaded flange</p> <p>HCA-S-400M-IN-FC InGaAs-PIN, integrated ball lens, 900 - 1700 nm FC fiber connector (fix/permanent)</p>
Available Accessories	<p>PRA-FC PRA-FCA PRA-FSMA</p>  <p>Fiber-adapter with external 1.035"-40 thread (suitable for FST models only).</p> <p>PRA-PAP</p>  <p>Alternative mounting option: Post adapter plate, easy to mount on FEMTO photoreceiver series OE, FWPR, PWPR, HCA-S and LCA-S.</p> <p>PS-15-25-L</p>  <p>Power supply Input: 100 – 240 VAC Output: ±15 VDC</p>
Specifications	<p>Test conditions $V_s = \pm 15 \text{ V}$, $T_A = 25 \text{ }^\circ\text{C}$, output load impedance $50 \text{ } \Omega$, warm-up 20 minutes (min. 10 minutes recommended)</p> <p>Gain</p> <p>Transimpedance gain $5.0 \times 10^3 \text{ V/A}$ (@ output load $50 \text{ } \Omega$)</p> <p>Gain accuracy $\pm 1 \text{ } \%$ (electrical)</p> <p>Conversion gain $2.7 \times 10^3 \text{ V/W typ.}$ (@ 800 nm, output load $50 \text{ } \Omega$)</p> <p>Frequency Response</p> <p>Lower cut-off frequency DC</p> <p>Upper cut-off frequency (–3 dB) 400 MHz ($\pm 10 \text{ } \%$)</p> <p>Gain flatness $\pm 1 \text{ dB}$</p> <p>Time Response</p> <p>Rise/fall time (10 % – 90 %) 1.0 ns</p> <p>Input</p> <p>Noise equivalent power (NEP) 40 pW/$\sqrt{\text{Hz}}$ (@ 800 nm, 100 MHz)</p> <p>Optical saturation power 400 μW (for linear amplification, @ 800 nm)</p> <p>Input offset compensation range $\pm 200 \text{ } \mu\text{A}$, adjustable by offset potentiometer</p> <p>Detector</p> <p>Detector Si-PIN photodiode</p> <p>Active area $\text{Ø } 0.8 \text{ mm}$</p> <p>Spectral range 320 – 1000 nm</p> <p>Max. sensitivity 0.55 A/W typ. (@ 800 nm)</p>

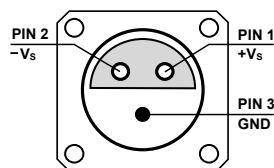
400 MHz Photoreceiver with Si-PIN Photodiode

Specifications (continued)

Output	Output voltage range	$\pm 1.0 \text{ V}$ (@ 50Ω output load) for linear operation and low harmonic distortion
	Max. output voltage range	$\pm 1.5 \text{ V}$ (@ 50Ω load)
	Output impedance	50Ω (terminate with 50Ω load)
	Output noise	$3 \text{ mV}_{\text{RMS}}$ ($20 \text{ mV}_{\text{PP}}$) typ. (@ 50Ω load, no signal on detector, measurement bandwidth 1.5 GHz)
Input Flange	Material	1.4305 stainless steel, nickel-plated (FST flange) AlMg4.5Mn, nickel-plated (FS flange)
Coupler Ring (FST version only)	Material	1.4305 stainless steel, glass bead blasted
Power Supply	Supply voltage	$\pm 15 \text{ V}$ ($\pm 14.5 \text{ V} \dots \pm 16.5 \text{ V}$)
	Supply current	$\pm 55 \text{ mA}$ (depends on operating conditions, recommended power supply capability min. $\pm 150 \text{ mA}$)
Case	Weight	209 g (0.46 lbs) HCA-S-400M-SI-FST incl. coupler ring 196 g (0.43 lbs) HCA-S-400M-SI-FS 188 g (0.41 lbs) HCA-S-400M-SI-FC 200 g (0.44 lbs) HCA-S-400M-SI-SMA
	Material	AlMg4.5Mn, nickel-plated
Temperature Range	Storage temperature	$-30 \text{ }^{\circ}\text{C} \dots +85 \text{ }^{\circ}\text{C}$
	Operating temperature	$0 \text{ }^{\circ}\text{C} \dots +60 \text{ }^{\circ}\text{C}$

Absolute Maximum Ratings	Optical input power (CW)	20 mW
	Power supply voltage	$\pm 20 \text{ V}$

Connectors	Input	HCA-S-400M-SI-FST	1.035"-40 threaded flange for free space applications and for use with various types of optical standard accessories
		HCA-S-400M-SI-FS	25 mm dia. unthreaded flange for free space applications
		HCA-S-400M-SI-FC	FC fiber optic connector (fix/permanent, FC/PC and FC/APC compatible)
		HCA-S-400M-SI-SMA	FSMA fiber optic connector (fix/permanent)
	Output	BNC jack (female)	
	Power supply	LEMO® series 1S, 3-pin fixed socket (mating plug type: FFA.1S.303.CLAC52)	



Pin 1: +15 V
Pin 2: -15 V
Pin 3: GND

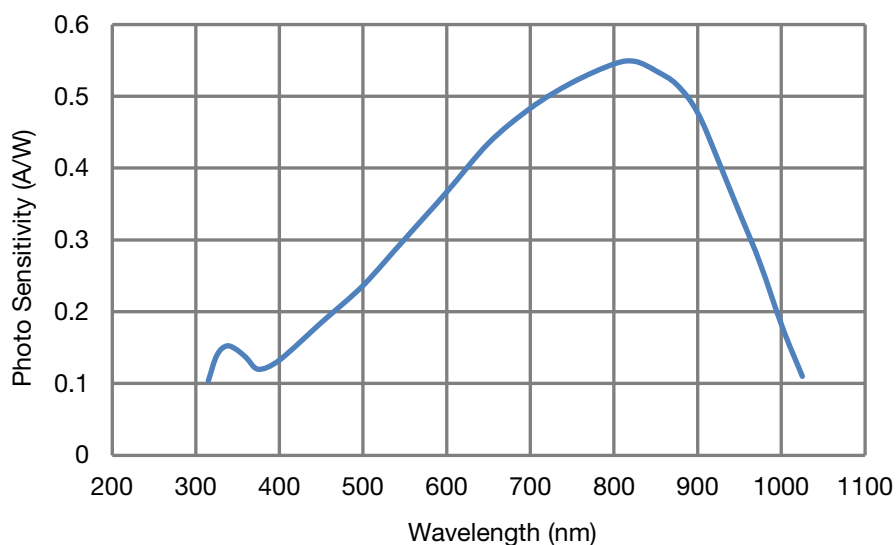
Scope of Delivery	HCA-S-400M-SI, internally threaded coupler ring (FST version only), LEMO® 3-pin connector, datasheet, transport package
-------------------	---

400 MHz Photoreceiver with Si-PIN Photodiode

Ordering Information

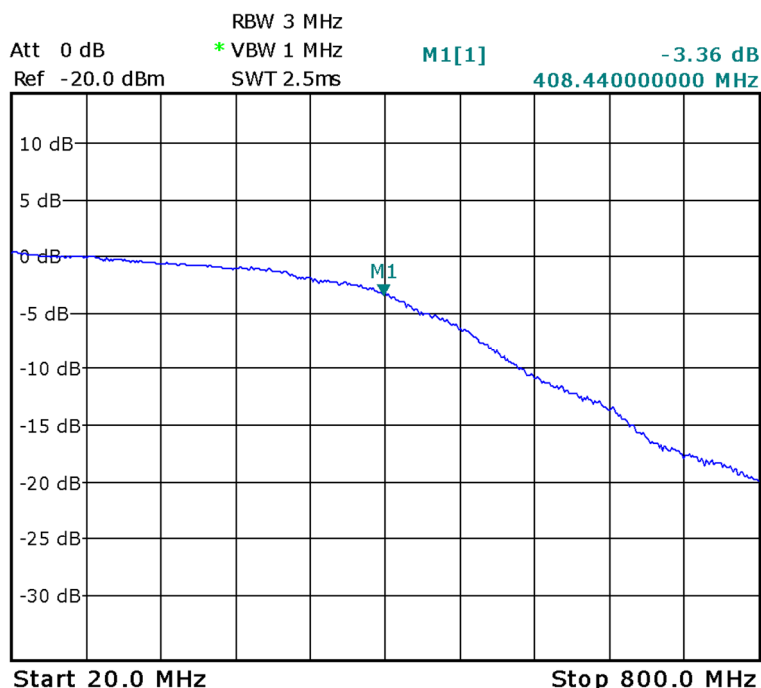
HCA-S-400M-SI-FST	1.035"-40 threaded flange for free space applications and for use with various types of optical standard accessories.
HCA-S-400M-SI-FS	25 mm dia. unthreaded flange for free space applications.
HCA-S-400M-SI-FC	FC fiber optic connector (fix/permanent, FC/PC and FC/APC compatible).
HCA-S-400M-SI-SMA	FSMA fiber optic connector (fix/permanent).

Spectral Responsivity



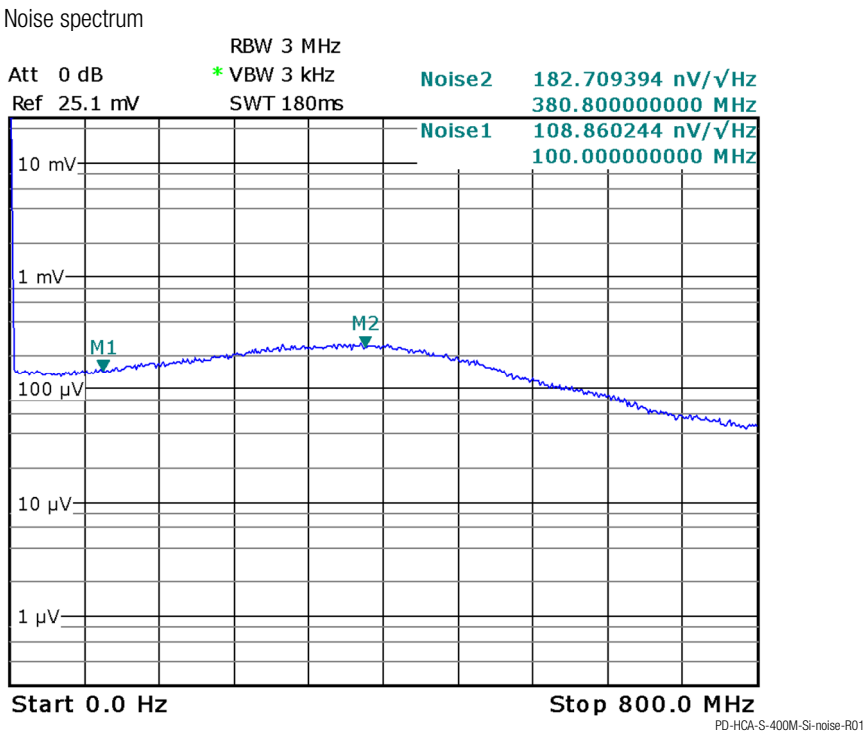
Typical Performance Characteristics

Frequency response



400 MHz Photoreceiver
with Si-PIN Photodiode

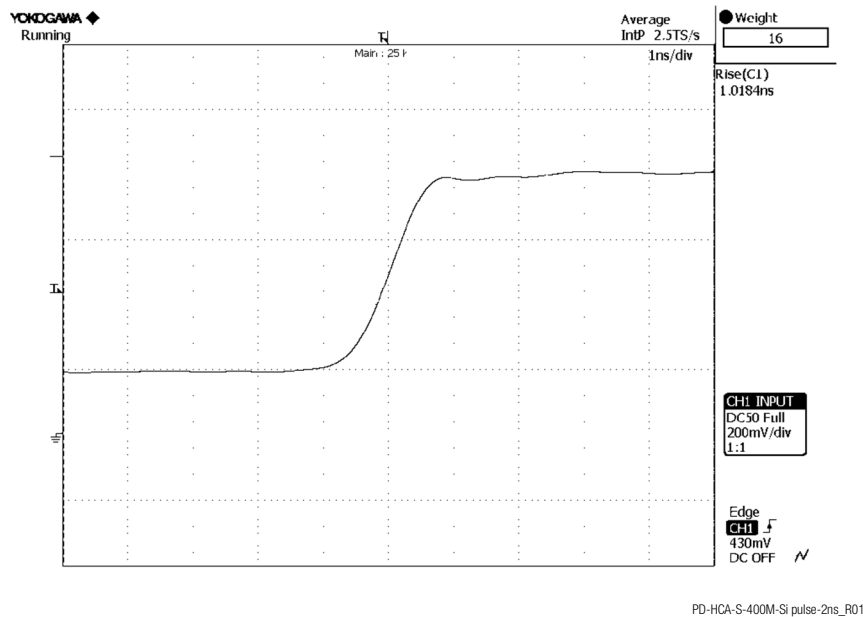
Typical Performance
Characteristics (continued)



Note: spectral noise data is measured at the amplifier output with no signal on the photodiode. To determine the spectral input noise divide the measured output noise by the amplifier conversion gain.
Conversion gain (V/W) = amplifier gain (V/A) × photo sensitivity (A/W).

Marker	frequency	output noise	resulting input noise (NEP)
1	100 MHz	109 nV/√Hz	40 pW/√Hz (@ 800 nm)

Pulse response to square wave input signal
(with 16 times averaging)

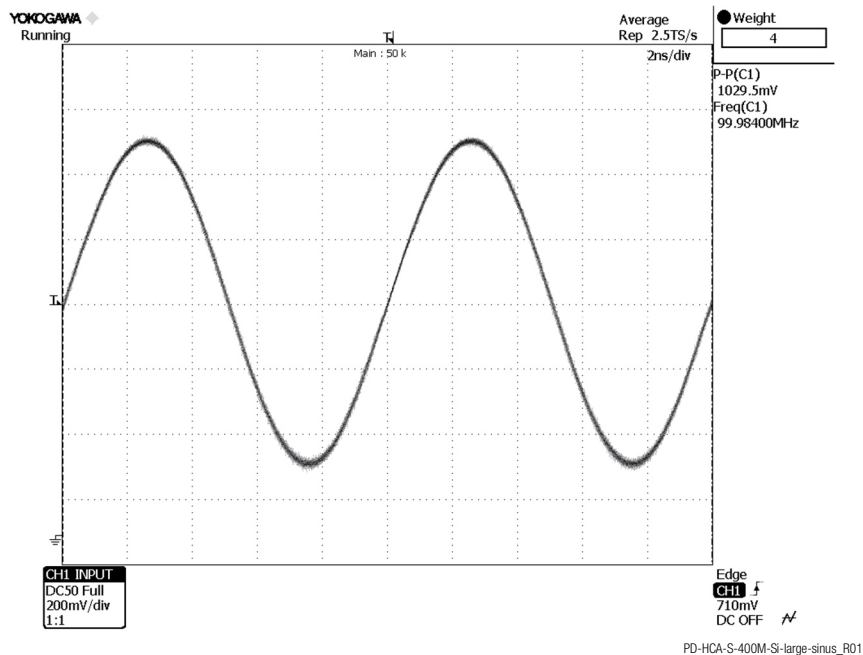


PD-HCA-S-400M-SI pulse-2ns_R01

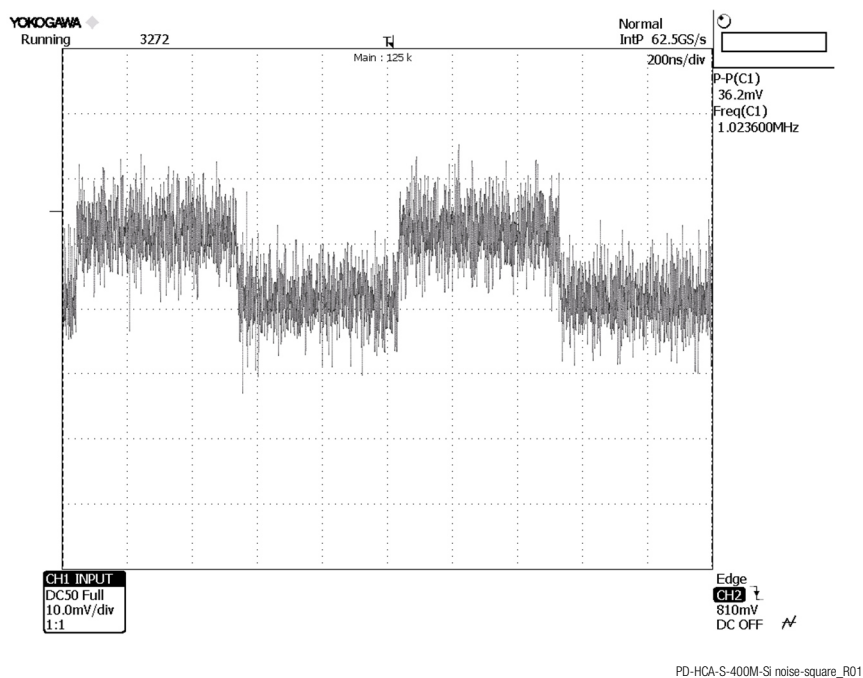
400 MHz Photoreceiver with Si-PIN Photodiode

Typical Performance
Characteristics (continued)

Large signal response
output signal for 100 MHz, 370 μ W modulated optical input signal
(with 4 times averaging)



Small signal response
output signal for 3.7 μ W modulated optical input signal, 1 MHz square wave, without averaging



Typical Performance Characteristics (continued)

YOKOGAWA Running

Main : 125 k

Average IntP 62.5GS/s

200ns/div

Weight 64

P-P(C1) 11.05mV

Freq(C1) 1.010183MHz

CH1 INPUT

DC50 Full

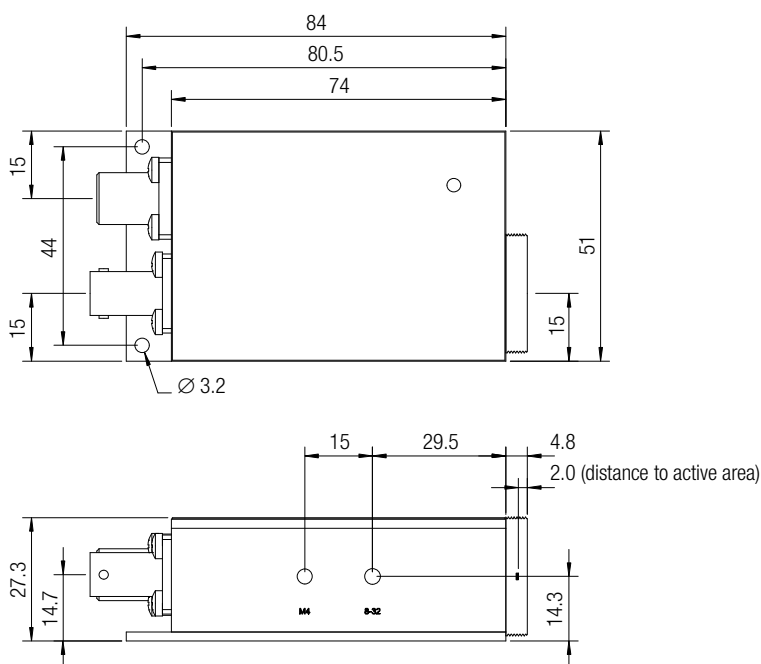
10.0mV/div

1:1

Edge CH2 t 810mV DC OFF

PD-HCA-S-400M-Si noise-square average R01

HCA-S-400M-SI-FST (1.035"-40 threaded free space input)



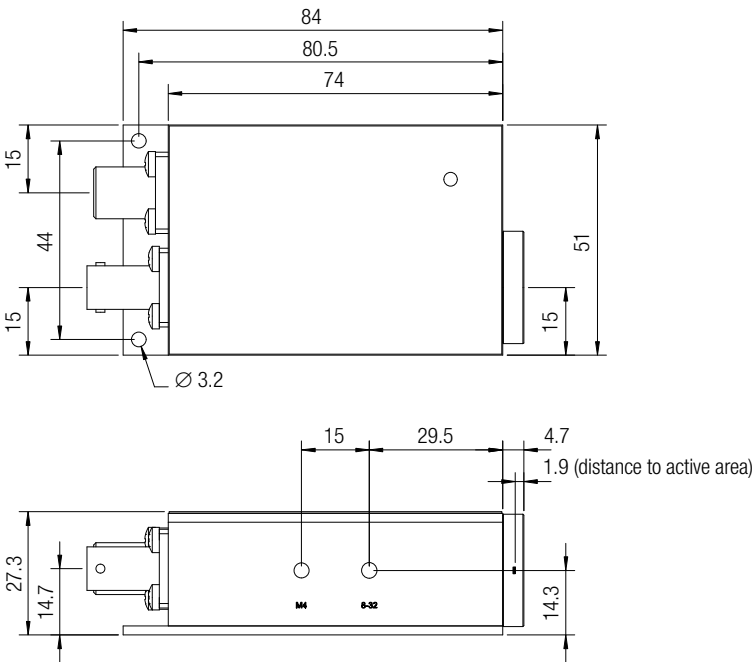
DZ-HCA-S-X00-SI FST R1

all dimensions in mm unless otherwise noted

400 MHz Photoreceiver
with Si-PIN Photodiode

Dimensions (continued)

HCA-S-400M-SI-FS (25 mm dia. unthreaded free space input)



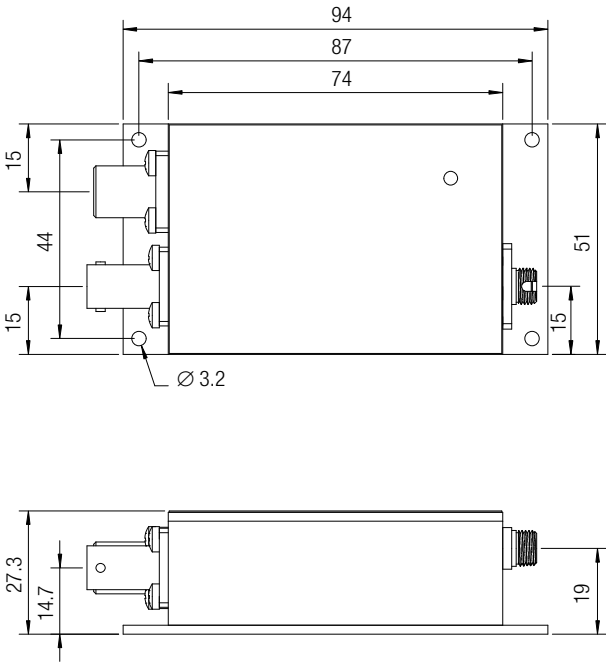
DZ-HCA-S-X00-SI_FS_R1

all dimensions in mm unless otherwise noted

400 MHz Photoreceiver
with Si-PIN Photodiode

Dimensions (continued)

HCA-S-400M-SI-FC (FC fiber optic connector)



DZ-HCA-S-XX-XX_FC_R1

all dimensions in mm unless otherwise noted

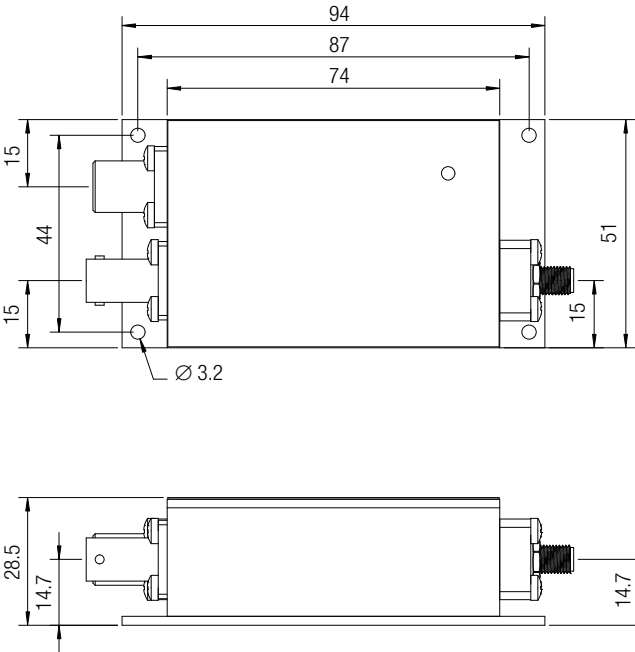
Datasheet

HCA-S-400M-SI

400 MHz Photoreceiver
with Si-PIN Photodiode

Dimensions (continued)

HCA-S-400M-SI-SMA (FSMA fiber optic connector)



DZ-HCA-S-XX-XX_SMA_R1

all dimensions in mm unless otherwise noted

FEMTO Messtechnik GmbH
Klosterstr. 64
10179 Berlin · Germany
Phone: +49 30 280 4711-0
Fax: +49 30 280 4711-11
Email: info@femto.de
www.femto.de

Specifications are subject to change without notice. Information provided herein is believed to be accurate and reliable. However, no responsibility is assumed by FEMTO Messtechnik GmbH for its use, nor for any infringement of patents or other rights of third parties which may result from its use. No license is granted by implication or otherwise under any patent or patent rights of FEMTO Messtechnik GmbH. Product names mentioned may also be trademarks used here for identification purposes only.

© by FEMTO Messtechnik GmbH · Printed in Germany