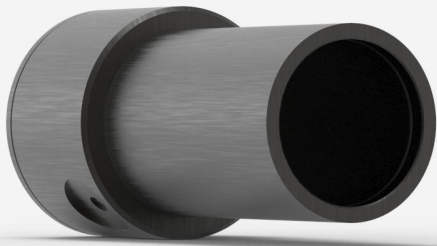




UM9B-BL-L-D0

Pyroelectric detector for laser power measurement up to 200 μ W.



KEY FEATURES

VERY LOW NOISE LEVEL

Noise levels of a photo detector, but with the large bandwidth of a pyroelectric: down to 5 nW when using the analog power module (APM).

VERY HIGH RESPONSIVITY

Up to 20 000 V/W when using the analog power module (APM)

VERY LARGE BANDWIDTH

From DUV to FIR thanks to pyroelectric technology

SMART INTERFACE

Containing all the calibration data

COMPATIBLE STAND

[STAND-D-233](#)



SPECIFICATIONS

MEASUREMENT CAPABILITIES

| | |
|--|------------------|
| Maximum average power (continuous) | 200 μ W |
| Noise equivalent power | 5 nW |
| Spectral range ¹ | 0.1 - 20 μ m |
| Typical rise time | 0.2 s |
| Typical power sensitivity | 20000 mV/W |
| Power calibration uncertainty ² | \pm 4 % |
| Chopper frequency ³ | 5 \pm 1 Hz |

1. For the calibrated spectral range, see the user manual.
2. At 633 nm.
3. SDC-500 digital optical chopper sold separately

DAMAGE THRESHOLDS

| | |
|-------------------------------|-----------------------|
| Maximum average power density | 50 mW/cm ² |
|-------------------------------|-----------------------|

PHYSICAL CHARACTERISTICS

| | |
|-------------------|----------------|
| Aperture diameter | 9 mm |
| Absorber | BL |
| Dimensions | 38.1Ø X 79D mm |
| Weight | 0.09 kg |

ORDERING INFORMATION

| | |
|--------------|--------|
| UM9B-BL-L-D0 | 202241 |
|--------------|--------|

Specifications are subject to change without notice. Refer to the user manual for complete specifications.

INTERESTED IN THIS PRODUCT?



GET A QUOTE

Find your local sales representative at gentec-eo.com/contact-us