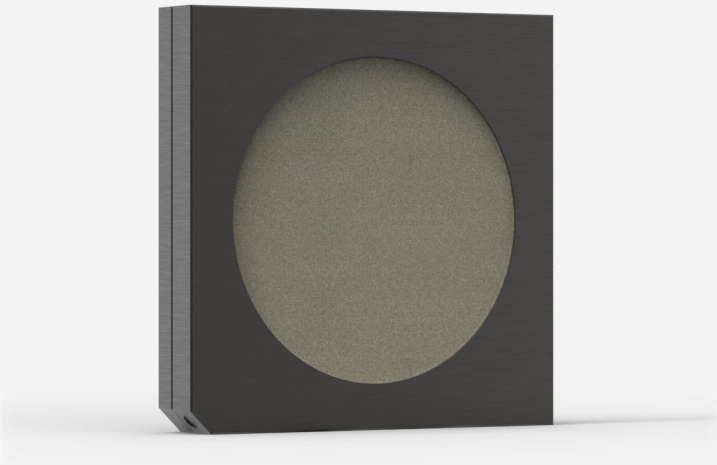




QE95LP-S-MB-D0

Pyroelectric detector for laser energy measurement up to 70 J.



PRODUCT FAMILY KEY FEATURES

MODULAR CONCEPT

Increase the power capability of your detector: 2 different cooling modules

EXTRA LARGE APERTURE

Effective aperture of 95 mm Ø

QED ATTENUATOR AVAILABLE

Measure up to 5X higher energies. Available with optional calibration, all wavelengths between 532 & 1064 nm, or single wavelength. [Read more.](#)

LOW NOISE LEVEL

15 µJ for the MB coating

TEST TARGET INCLUDED

With the MB models

SMART INTERFACE

Containing all the calibration data

COMPATIBLE STAND

[STAND-D-233](#)



SPECIFICATIONS

MEASUREMENT CAPABILITIES

Spectral range ¹	0.193 - 20 µm
Typical rise time	2 ms
Repeatability	<0.5%
Maximum repetition frequency	40 Hz
Maximum measurable energy ²	70 J
Noise equivalent energy ³	15 µJ
Maximum pulse width	1.5 ms
Energy calibration uncertainty	±3 %

1. For the calibrated spectral range, see the user manual.
2. At 1064 nm, 150 µs, single-shot. Increasing pulse width increases maximum measurable energy.
3. Nominal value. Actual value depends on electrical noise in the measurement system.

DAMAGE THRESHOLDS

Maximum average power density ¹	10 W/cm²
Maximum energy density ²	0.6 J/cm²
Maximum power	20 W

1. May vary with wavelength and average power.
2. At 1064 nm, 7 ns, 10 Hz. May vary with wavelength and pulse width.

PHYSICAL CHARACTERISTICS

Cooling	Convection
Aperture diameter	95 mm
Absorber	MB
Dimensions	122H x 122W x 20D mm
Weight	0.78 kg

ORDERING INFORMATION

QE95LP-S-MB-D0	201307
QE95LP-S-MB-INE-D0	



QE95LP-S-MB-IDR-D0

203309

QE95LP-S-MB-INT-D0

202778

Specifications are subject to change without notice. Refer to the user manual for complete specifications.

INTERESTED IN THIS PRODUCT?

GET A QUOTE

Find your local sales representative at gentec-eo.com/contact-us